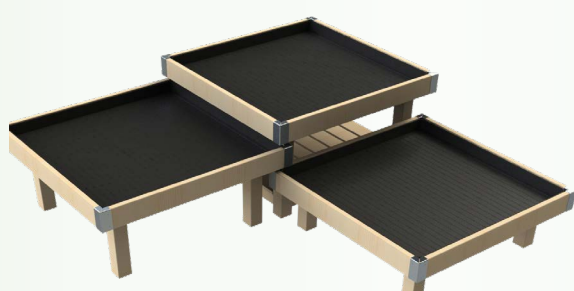


Houseplant Arrangement



3 Tier Houseplant Tables

1000mm x 1000mm top
300, 450, 600mm bed H.

All come with plastic trays as shown, bung option available.

Half Pallet - 2 sets of 3 Tables

Tanalised - £949
1 Coat Wash - £1099
Bung Option - +£29.94

Full Pallet - 4 sets of 3 Tables

Tanalised - £1725
1 Coat Wash - £1999
Bung Option - +£59.99

Multi-level Displays



Set of 3 Hex Bedding Tables

4 sets £1099.99 delivered* on full pallet
1400 point to point at 300, 450, 600mm bed H.

- Supplied flat packed and palletised
- Perfect for multi-level displays
- 12no. tables in total

Plant Pyramid

1 set £675.99 delivered* on full pallet
Overall size of half: 2000 W x 1000 D x 1600mm H

- Supplied in 2 halves completes 1 set
- Standard pyramid has 6 tiered shelves at 145 x 21mm
- Displays over 150 1ltr pots
- Walkway focus point



3 & 4 Tier Display Units

6no. 3 tier £1174.99 delivered* on full pallet
6no. 4 tier £1299.99 delivered* on full pallet
2100 W x 980 D x 1150mm H

- 2 removable shelves that are also tilt capable (4 tier has 3)
- Mobile option available
- Linked sales - pots/plant/compost
- Supplied flat packed and palletised

Display Tables



Tilt Table

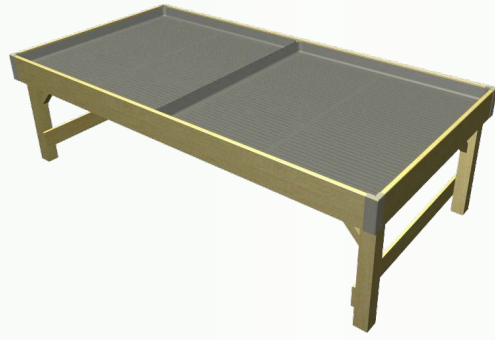
12no. tables £1274.99 delivered* on full pallet
2000 W x 1000 D x 600mm bed height

- Tilt at an angle to best display your products.
- Works brilliantly for bedding plants

Bedding & Shrub Table

12no. tables £999.99 delivered* on full pallet

- Option 1 - 12no. Bedding tables
2000 W x 1000 D x 600mm bed H (120mm surround)
- Option 2 - 12no. Shrub tables
2000 W x 1000 D x 450mm bed H (145mm surround)
- Supplied flat packed and palletised



Flood Table

10no. tables £1199.99 delivered* on full pallet
1920 W x 960 D x 600mm H (145mm surround)

- Supplied flat packed and palletised.
- Includes 2 black plastic flood tray per table 950 x 950mm.

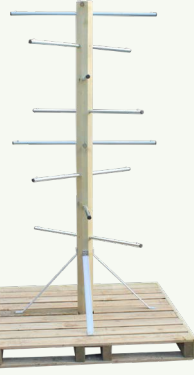
Trestle Table

6 no. tables for £549.99 delivered* on full pallet
12 no. tables for £979.99 delivered* on full pallet
1700 W x 770 D x 770mm bed H

- Foldable legs for flat-pack storage
- Lower shelf for additional merchandising space
- Ideal display unit for flexibility of use



Hanging Basket & Tree Displays



Hanging Basket Tree

4no. £884.99 delivered* on full pallet
1000 W x 1000 D x 2200mm H

- 8 poles
- 16 hanging positions
- Slatted base
- Access for pump truck

Double Sided Tree Bay

10no. £1199.99 delivered* on full pallet
2450 W x 850 D x 1200mm H

- Double sided top rail providing protection from wind and customers
- 1no. end POS



All of our timber is FSC certified so you can be confident that our wood is sourced from sustainable and well managed forests.

Terms & conditions

All prices are exclusive of VAT and are correct at time of print and are subject to change. Delivered price is included for UK mainland only (excluding Scottish Highlands). All images in this document are for illustrative purposes only. Offers valid until November 2018. We reserve the right to withdraw this offer without notification. See our full terms and conditions for further details. This flyer supersedes all previous flyers.